

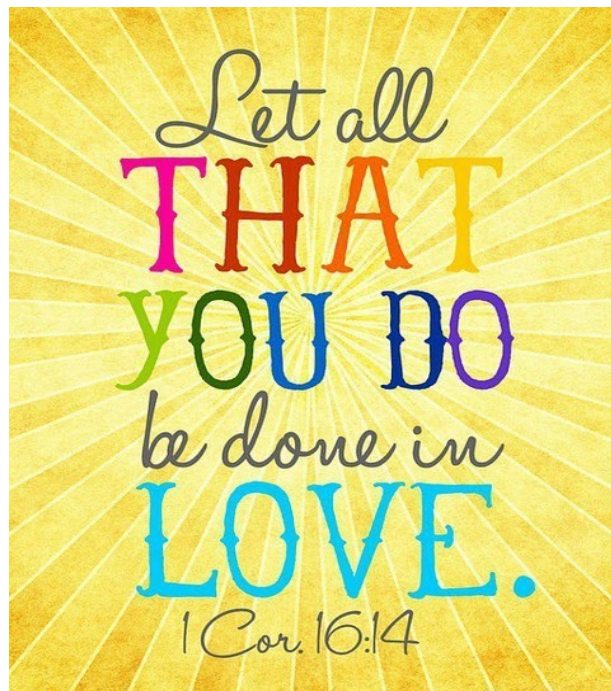
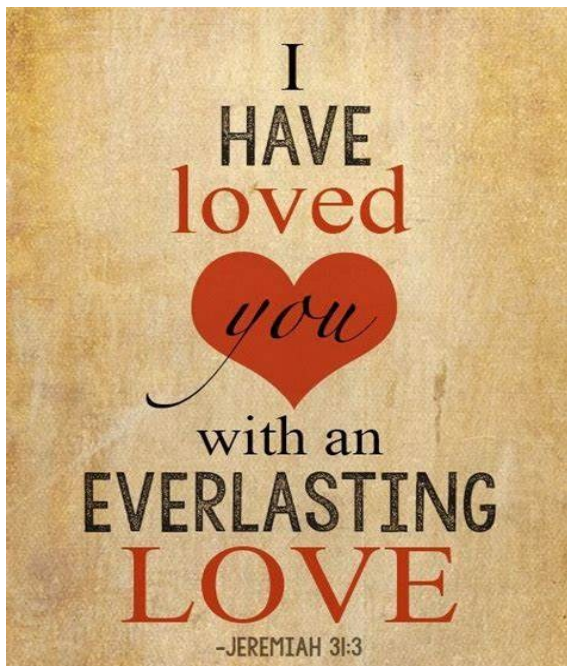
FEBRUARY

Newsletter

Brenda L. Farber
Ashland MC Secretary
Editor/Writer



GLOBAL
METHODIST CHURCH





Kid's Cupboard

Each week, the Kid's Cupboard distributes food to kids. Each week, kids are given individually packaged goodies designed to be able to have something to eat even if they are home alone.

Here is a suggestion for each month.

February: pudding/jello cups

March: mac & cheese cups

April: cereal

May: granola bars

The Kid's Cupboard could not sustain without your help. Because of your generosity, they can continue to provide the kids with milk, dairy products, meat and fresh fruit. There is a basket in the back that goes to the Kid's Cupboard. Items can also be dropped off at the Lutheran Church.



The need for food is always great. If you are able, please donate to the Food Pantry. Your help is appreciated.

They are always looking for food/personal care donations and monetary donations that they use to purchase things like milk, eggs, bread and meat.

February needs: pancake syrup, dish soap & men's deodorant

If you have any questions, you can call Jean Stewart at (531)240-0186

***Jean Stewart from the Ashland Food Pantry wanted to let folks know she appreciates being able to give a list of needs so she has what she needs to make the Food Pantry operate. It makes things easier for her. She appreciates those that donate to the pantry.**

Prayer page!

February

Pray for our church family... Pray for the person on the day indicated!

- | | | |
|-------------------|--------------------|---------------------|
| 1. Bob Luebbe | 11. Carol Munch | 21. Jon Richards |
| 2. Christy Luebbe | 12. Craig Murphey | 22. Ellen Richards |
| 3. Bill Maack | 13. Stacie Murphey | 23. Eric Richards |
| 4. Carol McCall | 14. Rodger Osburn | 24. Katie Richards |
| 5. Brad McCumber | 15. Joy Osburn | 25. Jeannie Riggins |
| 6. Deb McCumber | 16. Ron Pletcher | 26. Dixie Sanger |
| 7. Linda John | 17. Deb Pletcher | 27. Joel Schrader |
| 8. Rex Minert | 18. Karen Raikes | 28. Joan Schrader |
| 9. Gayle Minert | 19. Wayne Rapp | |
| 10. Russ Munch | 20. Joyce Rapp | |

Ashland MC prayer list...

Emily Koesters-ongoing issues

Homebound members

Friends and family at Oxbow and

Ashland Care Center

Luke (Matt & Shirley Vickinovac's grandson)

Sponsored kids: Ruth, Kadiatu & Benny

We need to pray for our new pastor search. Pray that God sends us the pastor that will meet our needs/wants.



Pastor Terry Otto & Judy Otto-health issues

Jessica Skretta-difficult recovery from a car accident

Pastor Jeff & Linda Thurman

Ashland MC and all the other churches

Our youth & the youth of our community

ROC Youth Center-monthly volunteers & ROC kids

Families in financial hardship

Our Country, military and our government

Mark Campbell

Linda Auman-breast cancer

Deb Brandl-health issues

Those having surgery/recovering from surgery.

Those that have lost loved ones

Jerry Hoffman- Tina's dad, health issues, moving to Oxbow

Pray for yourself and your own spiritual growth

Pray for the growth of the church....if we are not growing, we are dying.

Pray for those that have not joined us for church for a long time

Pray for those that do not know or do not want to know Christ

People who struggle with mental and physical issues.

Jerry Newsham-health issues



Baylor Ruth-Tichota Howard's baby, passed hearing test

If you have updates for any of these folks, please let the office know.

Birthdays
of the Month



If your birthday is missing or incorrect, please contact the office.

| | |
|-------------|----------------|
| February 7 | Joyce Rapp |
| February 9 | Stacie Murphey |
| February 15 | Steve Landon |
| February 20 | Tina Elyea |
| February 28 | Joshua Farber |



Sundays at 10:30am

[www.facebook.com/
Ashland.mc.1291](http://www.facebook.com/Ashland.mc.1291)



Homebound list:

Karen Raikes 2524 Silver Street Ashland, NE 68003

Sterling Graham 1617 Bills Dr. #201 Ashland, NE 68003

Connie Weston 1617 Bills Drive Ashland, NE 68003

Suzy Campbell 4421 Ridgeview Drive Lincoln, NE 68516

Charles & Eleanore Elijah The Brant 6991 S. 178th Plaza Rm 214
Omaha, NE 68136

www.ashlandnemoc.org



If you are fairly new to Ashland Methodist Church and have not been added to our weekly email list, contact Brenda. She sends out the service power points, announcements and bulletin on Friday. This email list will also get you the monthly newsletter and calendar. We would also like to add you to the prayer/notification chain. It's a great way to keep informed. You can simply fill out a pink info card and put in collection plate or hand to one of the ushers.

Life of a

Church mouse...

The Church is not just a building...we are the church!

It takes many hands to do the work of God. No one can do it alone. We appreciate the many tasks that get done behind the scenes. We have to do more than GO to church, we must BE the church.

It takes many people to make a church function. A lot happens behind the scenes.

Thank you to everyone that stayed to help take down Christmas decorations and move things around in the Memorial room & Sanctuary. It goes smoothly when there are people to help out.

Thank you to Kayla Laune for creating a bulletin board for our Missions project.

Thank you to Krista Simpson for offering to pay to have carpets at the parsonage cleaned by Stanley Steamer.

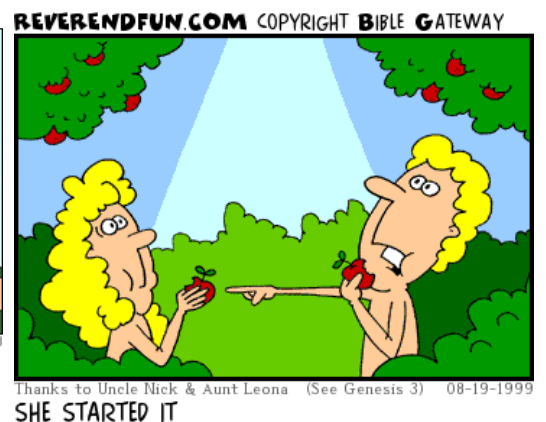
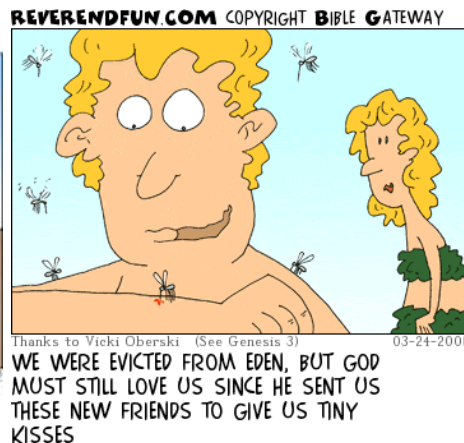


Ashland Men In Mission Schedule

Coffee at 6:30am, breakfast at 6:45am

| <u>Date:</u> | <u>Place:</u> | <u>Address:</u> |
|--------------|-----------------------------|----------------------------------|
| February 1 | Riverview Community Church | 324 N. 32nd Street |
| March 1 | Cedar Hill Methodist Church | 23001 N. 162nd Street –Greenwood |
| April 5 | Ashland Methodist Church | 1442 Adams Street |
| May 3 | Ashland Bible Church | 562 Ashland Road |
| June 7 | First Congregational Church | 1542 Boyd Street |

Just For Giggles ☺



If you or someone that attends Ashland Methodist Church, has a big memorable birthday or anniversary coming up, let the office know. We can publish it, so people can send cards.



If you are having surgery or had an accident, please let us know. We want to be able to pray for you. That is what being part of a church family is all about. We want to help if we can.



We have been doing some cleaning up and redoing some things around the church. We recently moved the “missions” table out of the sanctuary and Kayla Laune has been creating a bulletin board for all our mission projects. The John Wesley Global Methodist Endowment Fund has also set up their goal board and information center.



We also moved around some things in the sanctuary to have a more open space as folks walk in. The Food Pantry and Kid's Cupboard cubes have also found a home in the Memorial Room.

We are trying to make the space we have work better for all aspects of the church.

You are invited to attend!

Cedar Hill Pancake Feed

Saturday, February 1st

From 4:30pm-7:30pm

Free will donation





Church life...



Men in Mission

At Riverview Church

February 1, 2025 at 6:30am



Men's Accountability group, Mondays from 4:30pm-5:30pm

Women's Accountability group, Mondays from 4:30pm-5:30pm



Soups & Sweets

February 9, 2025

Right after church

Prepare your favorite soup or sweet to share during our Soups & Sweets lunch. Voting will be with dollar bills. The entry with the most votes wins.

Lately, it is difficult to find volunteers for Fellowship time. I don't know if people think it is a lot of work or just don't want to do it. I have listed below what needs to be done. It really isn't difficult. You need to be at church by 9:50am to get things ready. Most of the time, it is already set up by someone who gets there early. The coffee is started very early in the morning. It takes very little time. I hope when people see the responsibilities, they will realize that it is not hard to do. Please sign up so the same folks don't have to do it all the time. Thanks!

Fellowship Server responsibilities:



-The 30 cup coffee maker will already be prepared and finished perking.

-Prepare the serving table with coffee & drink cups, coffee creamer, spoons/coffee stirrers, and napkins.

- Plate and put out the goodies that are brought that morning or from the ones that were set out from the freezer, if this hasn't been done already.

-Make a non-coffee drink. It can be Kool-aid, lemonade or whatever there is.

-Clean up afterward and return the cookies to the freezer. Put all the stuff back into the cupboards. Wipe down the serving table, if there is any drinks or crumbs.

That is all there is to it. It is very simple and easy to do.





The search continues.....



As you know, Pastor Jeff would like to retire. He also cares about this church so he has been staying with us until we find a new pastor. This is the job of our Presiding Elder of the Upper Midwest Conference, Steve McElroy. In June, he passed along the name of an individual. We passed on this person because she didn't want to move to Ashland to live in our parsonage and she did not seem like a good fit for our church. In November, we were given the names of a couple from Arkansas. They want to preach as a couple and we are currently trying to figure out if they would be a good fit for us and if the finances would align. As a Board, we are kind of frustrated that things are not happening faster on the Conference side of things. We are being told that there are not many candidates that fit our requirements. One of our biggest requirements is that our new pastor lives in our parsonage. We spent a lot of money on some renovations and updates. Our pastor needs to be a part of the Ashland community. We would like someone a little younger, hopefully with a family that could thrive here. It has been a slow process. We are starting to be more active on our end. We will be reaching out the various seminaries and ministry colleges around the country. Even if we find a candidate, it still has to be approved by the Conference and make sure they have the requirements needed to preach in a Global Methodist Church.

In the meantime, if Pastor Jeff wants to take a Sunday or so off, we are working to fill the pulpit. We want to give him the opportunity to make plans with his family. Luckily, we have folks that are willing to step up and preach. If you are interested in preaching a Sunday, let the office know. We can even give you some directions and look at an outline of a Walk to Emmaus talk. There are a series of those talks that Pastor Jeff would like us to do next. We have been so blessed that Pastor Jeff is sticking with us. He will be very hard to replace. We just need to be patient. God will provide for us.



**It is our turn for the Food Truck
distribution at the Lutheran Church.
March 6th from 2-4pm
Let the office know if you can help.**

MISSIONS

across the street & around the world

What are Missions? The vocation or calling of a religious organization, especially a Christian one, to go out into the world and spread its faith through service and financial support.

Mission projects do not have to be across the world, they can be closer to home. We continue to financially support our 3 sponsored kids from The Raining Season in Sierra Leone, Africa.

There names are Kadiatu, Ruth and Benny.



Happy New Year! It was an exciting end to 2024 in Sierra Leone. The days leading up to Christmas at The Raining Season brought several special activities, including a Christmas carol service and party at The Raining Season Primary School, our annual Christmas celebration, a party for our staff, and a second party thrown by a special guest at The Covering.

This year, the Christmas party was celebrated just before Christmas on December 20th. The party included Christmas decorations, a delicious meal, and dancing! All of the children received new African dress clothes and shoes. For the first time, our children who attend school outside the center were each able to invite a friend from school to join in the fun. The young adults who have been reunified were also invited to join the celebration.

Once again, thank you to everyone who donated to our Christmas festivities! The Christmas celebration is only one of many ways your support goes above and beyond providing for our children's basic needs and so much more. We continue to see our kids not only surviving but thriving. Thank you for your prayers and support that help make it all possible. We look forward to continuing our mission alongside you in 2025.
The Raining Season



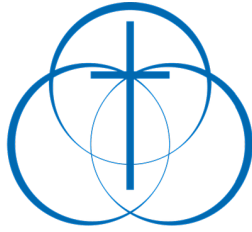
At the ROC, we are trying to implement a new structure. We are open Tuesdays and Thursdays from 5-7pm. We are going to be doing a mini bible study from 5-5:30pm. If the kids are not open to sitting down and having a lesson, they can come in at 5:30pm when the meal is served. We hope that this will give the volunteers and kids willing to participate in a calmer study time, as some of the kids tend to disrupt when they don't want to participate. We would love to have all the kids participate but we know that is not realistic. Jerry and I have the kids gather around and we take turns reading from the bible. We then talk about what was just read. It is a work in progress. Hopefully, some of what they hear will stick with them.



Thank you for your interest in us and the ministry we are involved with. We remember and value you! There has never been a better time to pray for the Pestals. Please keep praying!

“Therefore, I say to you, all things for which you pray and ask, believe that you have received them, and they will be granted you.” Mark 11:24

Chris and Brenda - Caleb and Noah Pestal



John Wesley Scholarship Endowment Fund

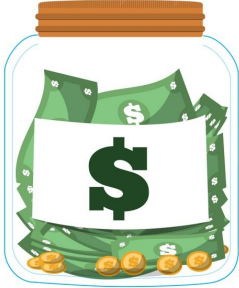


Randy Fleming Executive Director of the John Wesley Global Methodist Men's Scholarship Endowment Fund Receiving John Wesley 1k Plaque from Jerry Farber President of the John Wesley Global Methodist Men's Scholarship Endowment Fund for three 1k Donations from Great Plains Realty Auction Co. Fleming Family Foundation & Randy Fleming. The Goal of the John Wesley Scholarship Fund is to raise ten thousand dollars per year for ten years. We started fund raising in 2023 and we have reached our yearly goals and we have been fortunate enough to actually exceed them as well because of generous Global Methodist Men & Women. Jerry Farber challenged the Ashland Methodist Church Administrative Board to donate 1k to our Scholarship Fund and they approved it.



Jerry Farber President of the John Wesley Global Methodist Men's Scholarship Endowment Fund receiving check for One Thousand Dollars from Steve Laune Chairman of Ashland Methodist Church Administrative Board. Pictured are members of the Ashland Methodist Church attending Church on January 19th, a very chilly day.

In August 2025, the Scholarship fund will be offering one or two Scholarship's to a Global Methodist Man or Women entering full time Christian Service. Our goal is to Challenge every Nebraska Global Methodist Church to join by donating 1k to the John Wesley Global Methodist Men's Scholarship Endowment Fund.



Thanks Banks

Give thanks in all circumstances, for this is the will of God in Christ Jesus for you. 1 Thessalonians 5:18

Dust off your Thank Banks! If you don't have one, you can get one to put your offerings in. The following amounts are suggested donations to remind us of God's abundant blessings. At the end of the year, we will give the money collected to a mission of this church.

- January** \$1 for each resolution you made; \$1 for each resolution broken.
- February** \$1 for each person you have in your life that you will be sending a Valentine greeting to.
- March** \$1 for each time it snows.
- April** \$1 for each time it rains.
- May** \$1 for each year since you graduated from high school.
- June** \$1 for each letter in your maiden name.
- July** \$1 for each firework display you see.
- August** \$1 for every day we have a temperature of 100 degrees or more.
- September** \$1 for each child or grandchild you have in school.
- October** \$1 for each Jack-o-lantern you help carve
- November** \$1 for each person you have at your Thanksgiving table.
- December** \$ Give what you wish, as you thank God for the gift of his Son!





I have always felt this church is a second family to me. We first attended Ashland Methodist church in May of 2000. Tristin was about 16 months old and we had just found out that we were pregnant with our second child (Kayla Ann). On our first couple of visits to this church we had 2 wonderful people who made us feel welcome immediately. They were Kayla Laune and Viola Erickson (Daryl's mom). We started coming regularly and even helped with VBS that first year. I remember I was in the basement helping Patti Schofield and Julie Mink make a huge igloo out of milk jugs. The next year 2001, we were leading the Chadder the chipmunk videos. At that time, we had folks with small children so there was someone who ran the Nursery. That year, Jessica Skretta (Howard) helped out. In the first picture in 2001, she is holding our daughter Kayla who is about 7-8 months old at the time. I have a copy of this picture on a collage in our garage. Who would have thought that that 23 years later, I would be holding Jessica's daughter Hazel, during our Monday Ladies Chat group. With Jessica's work schedule, Hazel gets to join us quite often, which is a delight to our group. This is what being a church family is all about, being a part of each other's lives. That little Hazel puts a smile on my face. Our church is so blessed by her. I am so glad that Jessica and Hazel are attending and letting us be a part of their lives.

Speaking of our Monday Ladies Chat group, I cannot say enough how much those ladies mean to me. If you are not part of a small group, you are missing out. Our group has become quite close in the 17 months that we have been meeting. We don't always get the questions answered in the way that was designed but we get discussed what is on our hearts. I know I can count on those ladies to listen when I need to vent, pray for whatever concerns I have, give support when needed and to love me unconditionally. It has been said by many in this group that they didn't know they needed to be a part of a small group. They didn't know they needed it but God did. When I decided to start this group, I wasn't sure if anyone women would show up. There was a ladies Walk To Emmaus group quite a few years ago but it fizzled out. I was always envious when Jerry would talk about his Accountability groups over the years. I prayed about it quite a bit before I sent out the invitation. God answered my prayers with these women. Each week we come together to share our lives and our concerns. We don't skip a Monday very often because we love getting together to chat. We have also helped each other out outside these church walls. We have worked together during community/church service projects (Food Truck, sorting clothes at the Clothing closet, serving the Passover dinner, making & serving food for VBS). We are sisters in Christ. We have said many times that Monday afternoons are our favorite time of the week. I strongly encourage you to be a part of a small group. The men's group has room for a couple more participants. Our women's group is about the max that a small group is supposed to have. If you are interested in starting a new group, talk me or anyone in a small group. We will do what we can to help you do that. It will be a blessing to you, I guarantee it.

"For where two or more are gathered in my name, there am I among them." Matthew 18:20

Have a fabulous February!!!

Yours in Christ,

Brenda L. Farber

Ashland Methodist Church Secretary